

Sea Isle City appears to have had a solid summer season, but updated figures on visitor activities present a varying picture. For example, Sea Isle had growth in many areas such as revenues for beach tags +4% and parking meters +3%. On the other hand, we had a decline for residential water meter readings -1% and solid waste tonnage -1%.

Sea Isle City's Taxpayers Association (SICTA) recently updated our charts tracking many local activities thru September 30th. SICTA believes everyone gains if our community has a wider perspective for Sea Isle's pulse. Some other interesting observations, in no particular order:

#7 – Summer noise calls to our police increased +16% to 324 calls, resulting in 221 arrests which increased by +42%. Other crime statistics are unavailable as, unlike many towns in our area, Sea Isle does not publish crime statistics or police blotter activity during the year. We encourage our City government to consider doing this.

#6 – Rental permits decreased -6%, even though revenues were up +39% due to a fee increase. This is our fourth consecutive year of decreasing permits, which now total -12% or over 300 permits since 2006. Our housing stock has increased with development during that time, so the decreases could only be attributed to fewer folks renting their homes or some combination of either compliance or enforcement issues.

#5 – Sea Isle's beachcomber tours led by local volunteers, recorded an increase of +24% in tour participants. This nice increase was partly due to the previous year's frequent rainouts, but we might have had even more participants this year if the summer heat wave had been milder.

#4 – Unfortunately, turtle road kills were up +17% to 160 terrapins. The 2010 nesting season started early, with nesting terrapins out in full force in time for the Memorial Day weekend traffic. This was offset somewhat by additional fencing up at 1st street and more public awareness due to increased signage on Central Avenue. There was a 90% increase on Sea Isle Blvd, as 45 more terrapins were killed there than in 2009.

#3 – On a year-to-date basis, solid waste tonnage to the MUA landfill was down -1%. Construction and demolition waste was up +1%, although still significantly lower than five years ago. Residential waste decreased consistently, with recycled paper down -5%, recycled cans and bottles down -2% and, non-recycled waste down -2%.

#2 – Water pumped out of City wells decreased -9% or -19 million gallons. However, private meter reading usage decreased only -1%, so there must have been large reductions for the public sector activities (e.g. municipal facilities, water main flushing, leaking pipes, etc.). This rather good, but surprising, result merits further discussion with City government.

#1 – Treated sewerage decreased -1% or -3 million gallons. Since the private meter readings were down by a similar percentage, we have yet to see any implicit reduction for our large infiltration / inflow problem. Sea Isle continues to pay for expensively treating for possibly as much as 200 million gallons in "clean water" that gets into our sewer system annually.

All the detailed charts are available on the SICTA website (www.sicta.org). Take a look if you want a deeper perspective on Sea Isle City's activities.



Charting Our Course

Where have we been

Where are we going?

TABLE OF CONTENTS

Sea Isle City Charts

- | | | |
|-----------------------------------|----------------------------------|-------------------------------------|
| 1) Tax Rate Components | 7) Cape May County Library Taxes | 13) Parking Revenues |
| 2) Water & Sewer Rates | 8) Water & Sewer Bill Revenues | 14) Rental Permit Sales |
| 3) Municipal + Utility Budgets | 9) Water & Sewer Flow Volumes | 15) Crime Statistics |
| 4) Municipal, W&S Utility Budgets | 10) MUA Sewage Treatment Flows | 16) Noise Statistics |
| 5) Board of Education Budget | 11) Solid Waste Tonnage | 17) Beachcombing Tours |
| 6) Cape May County Budget | 12) Beach Tag Sales | 18) Diamondback Terrapin Road Kills |

Yellow highlight denotes updated charts

Tax Rate Components

Chart 1

	<u>2005</u>	<u>Shr</u>	<u>2006</u>	<u>Shr</u>	<u>2007</u>	<u>Shr</u>	<u>2008</u>	<u>Shr</u>	<u>2009</u>	<u>Shr</u>	<u>2010</u>	<u>Shr</u>
County	0.201		0.206		0.205		0.156		0.164		0.171	
County Library	0.029		0.036		0.041		0.030		0.030		0.029	
<u>County Open Space</u>	<u>0.010</u>		<u>0.013</u>		<u>0.014</u>		<u>0.011</u>		<u>0.011</u>		<u>0.010</u>	
County Taxes	0.240	42%	0.255	42%	0.260	41%	0.197	38%	0.205	38%	0.210	37%
District School	0.095	17%	0.092	15%	0.089	14%	0.067	13%	0.067	12%	0.069	12%
<u>Local Municipal</u>	<u>0.235</u>	<u>41%</u>	<u>0.263</u>	<u>43%</u>	<u>0.291</u>	<u>45%</u>	<u>0.254</u>	<u>49%</u>	<u>0.274</u>	<u>50%</u>	<u>0.293</u>	<u>51%</u>
General Tax Rates	0.570	100%	0.610	100%	0.640	100%	0.518	100%	0.546	100%	0.572	100%



Notes:

- 1) Sea Isle City had a town wide 2008 revaluation. This increased ratables +32% with an opposite effect on tax rates, which were partially offset by budget increases.
- 2) If you are interested in seeing the spending dollars underlying these tax rates, please see our separate budget charts.

Water & Sewer Rates

Chart 2

Rate Charge Period	Base Allowance (Gallons)	<u>Total Rents</u>		<u>Water Rents</u>		<u>Sewer Rents</u>	
		Base Charge	Excess Rate	Base Charge	Excess Rate	Base Charge	Excess Rate
1990 - 1998	45,000	\$280	\$3.06	\$50	\$1.53	\$230	\$1.53
1999 - 2006	30,000	\$350	\$3.00	\$70	\$1.50	\$280	\$1.50
2007 - 2008	30,000	\$440	\$3.00	\$120	\$1.50	\$320	\$1.50
2009 - 2010	30,000	\$510	\$3.00	\$140	\$1.50	\$370	\$1.50



Notes:
 1) All charges and allowances shown are for 6 month billing periods.

Municipal + Water & Sewer Utility Budgets

Chart 3

	2005		2006		2007		2008		2009		2010		<u>5 Year Chg%</u>	
			Chg%		Chg%		Chg%		Chg%		Chg%	Total	Annual	
Revenues														
Local Purpose Taxes	8,252,363	9,343,563	13%	10,326,712	11%	12,134,550	18%	13,177,611	9%	14,162,615	7%	72%	11%	
Water & Sewer Rents	4,900,000	4,900,000	0%	5,446,800	11%	6,450,000	18%	6,994,000	8%	7,150,000	2%	46%	8%	
Miscellaneous Revenues	4,882,284	4,396,489	-10%	4,696,543	7%	4,320,791	-8%	3,388,187	-22%	3,393,162	0%	-31%	-7%	
Delinquent Taxes	360,000	420,000	17%	400,000	-5%	251,000	-37%	223,300	-11%	245,000	10%	-32%	-7%	
<u>Surplus</u>	<u>2,396,205</u>	<u>2,100,000</u>	<u>-12%</u>	<u>1,753,093</u>	<u>-17%</u>	<u>1,368,340</u>	<u>-22%</u>	<u>740,000</u>	<u>-46%</u>	<u>1,377,000</u>	<u>86%</u>	<u>-43%</u>	<u>-10%</u>	
Total Revenues	20,790,852	21,160,052	2%	22,623,148	7%	24,524,682	8%	24,523,098	0%	26,327,777	7%	27%	5%	
Appropriations														
Salaries & Wages	7,587,210	7,906,266	4%	8,403,710	6%	8,994,650	7%	8,691,060	-3%	9,067,614	4%	20%	4%	
Group Health Insurance	2,546,464	2,893,923	14%	3,127,243	8%	3,442,908	10%	3,283,472	-5%	3,417,394	4%	34%	6%	
MUA Treatment Charges	2,527,989	2,594,763	3%	2,650,464	2%	2,852,683	8%	3,039,260	7%	3,158,841	4%	25%	5%	
Other Expenses	3,823,578	4,243,039	11%	4,665,285	10%	4,955,725	6%	5,185,804	5%	5,562,332	7%	45%	8%	
Capital Improvements	120,000	280,000	133%	280,000	0%	280,000	0%	150,000	-46%	594,250	296%	395%	38%	
Debt Service	3,800,816	2,725,016	-28%	3,067,566	13%	3,605,837	18%	3,648,950	1%	3,844,530	5%	1%	0%	
<u>Reserve - Uncollected Taxes</u>	<u>384,795</u>	<u>517,045</u>	<u>34%</u>	<u>428,880</u>	<u>-17%</u>	<u>392,879</u>	<u>-8%</u>	<u>524,552</u>	<u>34%</u>	<u>682,815</u>	<u>30%</u>	<u>77%</u>	<u>12%</u>	
Total Appropriations	20,790,852	21,160,052	2%	22,623,148	7%	24,524,682	8%	24,523,098	0%	26,327,777	7%	27%	5%	
Inflation - U.S. CPI Index	195.3	201.6	3%	207.3	3%	215.3	4%	214.1	-1%	219.5	3%	12%	2%	
Full Time Employees	132	136	3%	135	-1%	144	7%	119	-17%	119	0%	-10%	-2%	



Notes:

- 1) All figures as initially published in Municipal Budget documents.
- 2) Figures represent original budget amounts and not the actual dollar revenues and appropriations.
- 3) Municipal budgets are not intended to encompass all city-wide finances. Separate, additional accounting does exist for various Commissions and Trust Funds.
- 4) See our other charts for the separate Municipal and W&S Utility budgets.

Municipal Budget

Chart 4a

	<u>2005</u>		<u>2006</u>		<u>2007</u>		<u>2008</u>		<u>2009</u>		<u>2010</u>		<u>5 Year Chg%</u>	
			<u>Chg%</u>		<u>Chg%</u>		<u>Chg%</u>		<u>Chg%</u>		<u>Chg%</u>	<u>Total</u>	<u>Annual</u>	
<u>Revenues</u>														
Local Purpose Taxes	8,252,363	9,343,563	13%	10,326,712	11%	12,134,550	18%	13,177,611	9%	14,162,615	7%	72%	11%	
Miscellaneous Revenues	4,602,284	3,695,988	-20%	4,078,543	10%	3,987,791	-2%	3,071,343	-23%	3,132,435	2%	-32%	-7%	
Delinquent Taxes	360,000	420,000	17%	400,000	-5%	251,000	-37%	223,300	-11%	245,000	10%	-32%	-7%	
<u>Surplus</u>	<u>1,650,000</u>	<u>1,650,000</u>	<u>0%</u>	<u>1,450,000</u>	<u>-12%</u>	<u>1,040,000</u>	<u>-28%</u>	<u>594,000</u>	<u>-43%</u>	<u>1,177,000</u>	<u>98%</u>	<u>-29%</u>	<u>-7%</u>	
Total Revenues	14,864,647	15,109,551	2%	16,255,255	8%	17,413,342	7%	17,066,254	-2%	18,717,050	10%	26%	5%	
<u>Appropriations</u>														
Salaries & Wages	6,627,877	6,930,921	5%	7,413,453	7%	7,959,017	7%	7,650,612	-4%	7,659,501	0%	16%	3%	
Group Health Insurance	1,570,159	1,797,630	14%	1,953,266	9%	2,154,856	10%	2,041,347	-5%	2,668,927	31%	70%	11%	
Other Expenses	3,371,300	3,788,939	12%	4,177,490	10%	4,361,377	4%	4,504,243	3%	4,789,576	6%	42%	7%	
Capital Improvements	80,000	280,000	250%	280,000	0%	280,000	0%	150,000	-46%	594,250	296%	643%	49%	
Debt Service	2,830,516	1,795,016	-37%	2,002,166	12%	2,265,213	13%	2,195,500	-3%	2,321,980	6%	-18%	-4%	
<u>Reserve for Uncollected Taxes</u>	<u>384,795</u>	<u>517,045</u>	<u>34%</u>	<u>428,880</u>	<u>-17%</u>	<u>392,879</u>	<u>-8%</u>	<u>524,552</u>	<u>34%</u>	<u>682,815</u>	<u>30%</u>	<u>77%</u>	<u>12%</u>	
Total Appropriations	14,864,647	15,109,551	2%	16,255,255	8%	17,413,342	7%	17,066,254	-2%	18,717,050	10%	26%	5%	
Inflation - U.S. CPI Index	195.3	201.6	3%	207.3	3%	215.3	4%	214.1	-1%	219.5	3%	12%	2%	
Full Time Employees	116	122	5%	118	-3%	123	4%	106	-14%	106	0%	-9%	-2%	



Notes:

- 1) All figures as initially published in Municipal Budget documents.
- 2) Figures represent original budget amounts and not the actual dollar revenues and appropriations.
- 3) Municipal budgets are not intended to encompass all city-wide finances. Separate, additional accounting does exist for various Commissions and Trust Funds, as well as for our Water & Sewer Utility (see our separate chart).

Water & Sewer Utility Budget

Chart 4b

	2005		2006		2007		2008		2009		2010		5 Year Chg%	
			Chg%		Chg%		Chg%		Chg%		Chg%	Total	Annual	
Revenues														
Water & Sewer Rents	4,900,000	4,900,000	0%	5,446,800	11%	6,450,000	18%	6,994,000	8%	7,150,000	2%	46%	8%	
Miscellaneous Revenues	280,000	700,501	150%	618,000	-12%	333,000	-46%	316,844	-5%	260,727	-18%	-7%	-1%	
Surplus	746,205	450,000	-40%	303,093	-33%	328,340	8%	146,000	-56%	200,000	37%	-73%	-23%	
Total Revenues	5,926,205	6,050,501	2%	6,367,893	5%	7,111,340	12%	7,456,844	5%	7,610,727	2%	28%	5%	
Appropriations														
Salaries & Wages	959,333	975,345	2%	990,257	2%	1,035,633	5%	1,040,448	0%	1,408,113	35%	47%	8%	
Group Health Insurance	976,305	1,096,293	12%	1,173,977	7%	1,288,052	10%	1,242,125	-4%	748,467	-40%	-23%	-5%	
MUA Treatment Charges	2,527,989	2,594,763	3%	2,650,464	2%	2,852,683	8%	3,039,260	7%	3,158,841	4%	25%	5%	
Other Expenses	452,278	454,100	0%	487,795	7%	594,348	22%	681,561	15%	772,756	13%	71%	11%	
Capital Improvements	40,000	0	-100%	0	0%	0	0%	0	0%	0	0%	-100%	-100%	
Debt Service	970,300	930,000	-4%	1,065,400	15%	1,340,624	26%	1,453,450	8%	1,522,550	5%	57%	9%	
Total Appropriations	5,926,205	6,050,501	2%	6,367,893	5%	7,111,340	12%	7,456,844	5%	7,610,727	2%	28%	5%	
Inflation - U.S. CPI Index	195.3	201.6	3%	207.3	3%	215.3	4%	214.1	-1%	219.5	3%	12%	2%	
Full Time Employees	16	14	-13%	17	21%	21	24%	13	-38%	13	0%	-19%	-4%	



Notes:
 1) All figures as initially published in Municipal Budget documents.
 2) Figures represent original budget amounts and not the actual dollar revenues and appropriations.

Board of Education Budget

Chart 5

	2005-06	2006-07	Chg%	2007-08	Chg%	2008-09	Chg%	2009-10	Chg%	2010-11	Chg%	5 Year Chg%		
												Total	Annual	
Revenues														
Local Purpose Taxes	3,296,483	3,257,606	-1%	3,196,187	-2%	3,196,187	0%	3,196,187	0%	3,324,034	4%	1%	0%	
State & Federal Sources	544,036	507,478	-7%	507,345	0%	426,995	-16%	408,918	-4%	196,466	-52%	-64%	-18%	
Surplus Funds	632,259	496,817	-21%	453,672	-9%	397,842	-12%	442,688	11%	250,723	-43%	-60%	-17%	
Capital & Emergency Reserves	0	31,418	0%	0	-100%	0	0%	193,000	0%	168,640	-13%	0%	0%	
<u>Other Revenues</u>	<u>23,047</u>	<u>28,047</u>	<u>22%</u>	<u>30,196</u>	<u>8%</u>	<u>23,149</u>	<u>-23%</u>	<u>15,000</u>	<u>-35%</u>	<u>15,000</u>	<u>0%</u>	<u>-35%</u>	<u>-8%</u>	
Total Revenues	4,495,825	4,321,366	-4%	4,187,400	-3%	4,044,173	-3%	4,255,793	5%	3,954,863	-7%	-12%	-3%	
Appropriations														
Instruction	954,964	1,143,472	20%	1,002,265	-12%	1,103,493	10%	746,954	-32%	636,040	-15%	-33%	-8%	
Tuition to Other Districts	1,382,046	1,055,122	-24%	910,465	-14%	867,378	-5%	1,565,479	80%	1,760,784	12%	27%	5%	
Transportation	221,925	228,548	3%	231,985	2%	232,964	0%	305,270	31%	308,380	1%	39%	7%	
Benefits	575,014	540,084	-6%	652,155	21%	539,845	-17%	326,000	-40%	338,500	4%	-41%	-10%	
Capital & Emergency Funds	11,000	51,975	373%	22,148	-57%	100,689	355%	464,805	362%	84,979	-82%	673%	51%	
<u>Other Operating Expenses</u>	<u>1,350,876</u>	<u>1,302,165</u>	<u>-4%</u>	<u>1,368,382</u>	<u>5%</u>	<u>1,199,804</u>	<u>-12%</u>	<u>847,285</u>	<u>-29%</u>	<u>826,180</u>	<u>-2%</u>	<u>-39%</u>	<u>-9%</u>	
Total Appropriations	4,495,825	4,321,366	-4%	4,187,400	-3%	4,044,173	-3%	4,255,793	5%	3,954,863	-7%	-12%	-3%	
Inflation - U.S. CPI Index	195.3	201.6	3%	207.3	3%	215.3	4%	214.1	-1%	219.5	3%	12%	2%	
FTE Employees	31	32	0%	25	-20%	25	0%	18	-29%	13	-28%	-59%	-16%	
Pupils														
Pupils On Roll	97	86	-11%	85	-1%	78	-8%	56	-28%	51	-9%	-47%	-12%	
Pupils Sent to Other Districts	81	62	-23%	64	3%	50	-22%	84	68%	97	15%	20%	4%	
Total	178	148	-17%	149	1%	128	-14%	140	9%	148	6%	-17%	-4%	



Notes:

- 1) All figures as initially published in BOE Budget documents.
- 2) Figures represent original budget amounts and not the actual dollar revenues and appropriations.
- 3) FTE Employees defined as full time equivalents.
- 4) 2010 FTE Employees not available as of this report date.

Cape May County Budget

Chart 6

	<u>2005</u>	<u>2006</u>	<u>Chg%</u>	<u>2007</u>	<u>Chg%</u>	<u>2008</u>	<u>Chg%</u>	<u>2009</u>	<u>Chg%</u>	<u>2010</u>	<u>Chg%</u>	<u>5 Year Chg%</u>		
												<u>Total</u>	<u>Annual</u>	
Revenues														
County Purpose Taxes	73,072,666	75,031,629	3%	79,992,650	7%	82,759,002	3%	88,704,656	7%	92,412,096	4%	26%	5%	
Miscellaneous Revenues	28,636,969	33,351,215	16%	37,738,565	13%	38,376,557	2%	39,299,193	2%	38,381,434	-2%	34%	6%	
Surplus	15,734,036	19,933,472	27%	15,365,000	-23%	14,865,000	-3%	12,500,000	-16%	11,100,000	-11%	-29%	-7%	
Total Revenues	117,443,671	128,316,316	9%	133,096,215	4%	136,000,559	2%	140,503,849	3%	141,893,530	1%	21%	4%	
Appropriations														
Salaries & Wages	38,274,380	41,069,495	7%	43,806,343	7%	44,214,919	1%	45,886,590	4%	46,232,468	1%	21%	4%	
Group Health Insurance	17,264,259	19,236,434	11%	20,381,000	6%	21,223,100	4%	19,405,700	-9%	21,247,312	9%	23%	4%	
Other Expenses	41,668,287	43,600,469	5%	45,954,315	5%	48,708,367	6%	50,324,631	3%	49,137,180	-2%	18%	3%	
Deferred Charges	8,126,522	12,063,000	48%	10,954,351	-9%	10,390,792	-5%	12,478,802	20%	12,606,867	1%	55%	9%	
Capital Improvements	4,079,807	4,473,759	10%	4,779,431	7%	3,968,998	-17%	4,507,395	14%	3,550,986	-21%	-13%	-3%	
Debt Service	8,030,416	7,873,159	-2%	7,220,775	-8%	7,494,383	4%	7,900,730	5%	9,118,718	15%	14%	3%	
Total Appropriations	117,443,671	128,316,316	9%	133,096,215	4%	136,000,559	2%	140,503,848	3%	141,893,531	1%	21%	4%	
Inflation - U.S. CPI Index	195.3	201.6	3%	207.3	3%	215.3	4%	214.5	0%	219.5	2%	12%	2%	
Full Time Employees	1,068	1,014	-5%	1,033	2%	1,060	3%	1,055	0%	1,037	-2%	-3%	-1%	



Notes:
 1) All figures as initially published in County Budget documents.
 2) Figures represent original budget amounts and not the actual dollar revenues and appropriations.

Cape May County Library Taxes

Chart 7

<u>Municipality</u>	<u>County Library Taxes</u>						<u>5 Year Chg%</u>						
	<u>2005</u>	<u>2006</u>	<u>Chg%</u>	<u>2007</u>	<u>Chg%</u>	<u>2008</u>	<u>Chg%</u>	<u>2009</u>	<u>Chg%</u>	<u>2010</u>	<u>Chg%</u>	<u>Total</u>	<u>Annual</u>
Sea Isle City	989,123	1,242,781	26%	1,414,208	14%	1,429,314	1%	1,422,805	0%	1,390,828	-2%	41%	7%
Cape May	562,722	651,063	16%	727,783	12%	781,373	7%	812,482	4%	812,608	0%	44%	8%
Lower Township	845,428	1,024,903	21%	1,195,534	17%	1,281,674	7%	1,314,693	3%	1,283,117	-2%	52%	9%
Middle Township	535,479	700,247	31%	829,808	19%	893,724	8%	944,126	6%	924,331	-2%	73%	12%
North Wildwood	487,347	608,300	25%	818,363	35%	908,472	11%	942,172	4%	891,093	-5%	83%	13%
Stone Harbor	849,657	1,125,906	33%	1,350,888	20%	1,395,594	3%	1,419,830	2%	1,345,525	-5%	58%	10%
Upper Township	427,269	498,230	17%	581,183	17%	637,237	10%	649,213	2%	638,295	-2%	49%	8%
Wildwood	375,307	497,647	33%	607,304	22%	601,627	-1%	556,815	-7%	529,579	-5%	41%	7%
Wildwood Crest	454,729	560,450	23%	685,973	22%	744,232	8%	702,011	-6%	677,151	-4%	49%	8%
Other Municipalities	475,156	573,595	21%	678,767	18%	743,991	10%	769,840	3%	711,685	-8%	50%	8%
Total Library Taxes	6,002,217	7,483,122	25%	8,889,811	19%	9,417,239	6%	9,533,987	1%	9,204,212	-3%	53%	9%

<u>Municipality</u>	<u>2005</u>	<u>2006</u>	<u>2007</u>	<u>2008</u>	<u>2009</u>	<u>2010</u>
Sea Isle City	16%	17%	16%	15%	15%	15%
Cape May	9%	9%	8%	8%	9%	9%
Lower Township	14%	14%	13%	14%	14%	14%
Middle Township	9%	9%	9%	9%	10%	10%
North Wildwood	8%	8%	9%	10%	10%	10%
Stone Harbor	14%	15%	15%	15%	15%	15%
Upper Township	7%	7%	7%	7%	7%	7%
Wildwood	6%	7%	7%	6%	6%	6%
Wildwood Crest	8%	7%	8%	8%	7%	7%
Other Municipalities	8%	8%	8%	8%	8%	8%
Total Library Taxes	100%	100%	100%	100%	100%	100%



Notes:

- 1) Sea Isle is the single largest contributing municipality in the County with a 2010 tax of \$1.4M tax representing a 15% share. SIC's Library taxes have grown 41% since 2005, far more than inflation.
- 2) Avalon and Ocean City are not part of the County Library system. Avalon's 2005 withdrawal caused other municipalities to shoulder a greater share of the tax burden. Remaining towns are now vulnerable to anyone else leaving the system ("Last one at the table pays the bill").
- 3) Cape May County is building a new library for Sea Isle City. At a projected cost of \$6.6M, it is equivalent to 4-5 years of our library taxes.
- 4) County-wide Library taxes have increased 53% since 2005, averaging a 9% increase over that period. However, 2010 taxes are down 3%.

Water & Sewer Bill Revenues

Chart 8

	<u>Apr 2006</u>	<u>Oct 2006</u>	<u>Apr 2007</u>	<u>Oct 2007</u>	<u>Apr 2008</u>	<u>Oct 2008</u>	<u>Apr 2009</u>	<u>Oct 2009</u>	<u>Apr 2010</u>	<u>Oct 2010</u>
<u>Water</u>										
Minimums	\$483,630	\$492,450	\$845,040	\$852,840	\$851,400	\$857,160	\$994,280	\$1,001,280	\$1,001,560	\$1,005,620
Excess	<u>\$10,701</u>	<u>\$77,135</u>	<u>\$20,137</u>	<u>\$77,383</u>	<u>\$13,611</u>	<u>\$69,487</u>	<u>\$18,015</u>	<u>\$65,348</u>	<u>\$12,959</u>	<u>\$64,748</u>
Total	\$494,331	\$569,585	\$865,177	\$930,223	\$865,011	\$926,647	\$1,012,295	\$1,066,628	\$1,014,519	\$1,070,368
Change %			75%	63%	0%	0%	17%	15%	0%	0%
<u>Sewer</u>										
Minimums	\$1,892,520	\$1,927,240	\$2,204,800	\$2,225,280	\$2,222,080	\$2,237,120	\$2,571,870	\$2,590,370	\$2,591,110	\$2,602,210
Excess	<u>\$9,760</u>	<u>\$71,827</u>	<u>\$16,708</u>	<u>\$69,785</u>	<u>\$11,504</u>	<u>\$63,158</u>	<u>\$15,838</u>	<u>\$58,907</u>	<u>\$11,245</u>	<u>\$58,480</u>
Total	\$1,902,280	\$1,999,067	\$2,221,508	\$2,295,065	\$2,233,584	\$2,300,278	\$2,587,708	\$2,649,277	\$2,602,355	\$2,660,690
Change %			17%	15%	1%	0%	16%	15%	1%	0%
<u>Total</u>										
Minimums	\$2,376,150	\$2,419,690	\$3,049,840	\$3,078,120	\$3,073,480	\$3,094,280	\$3,566,150	\$3,591,650	\$3,592,670	\$3,607,830
Excess	<u>\$20,461</u>	<u>\$148,962</u>	<u>\$36,845</u>	<u>\$147,169</u>	<u>\$25,115</u>	<u>\$132,645</u>	<u>\$33,853</u>	<u>\$124,255</u>	<u>\$24,204</u>	<u>\$123,228</u>
Total	\$2,396,611	\$2,568,652	\$3,086,685	\$3,225,289	\$3,098,595	\$3,226,925	\$3,600,003	\$3,715,905	\$3,616,874	\$3,731,058
Change %			29%	26%	0%	0%	16%	15%	0%	0%
<u>Annual Totals</u>										
Minimums		\$4,795,840		\$6,127,960		\$6,167,760		\$7,157,800		\$7,200,500
Excess		<u>\$169,423</u>		<u>\$184,013</u>		<u>\$157,761</u>		<u>\$158,108</u>		<u>\$147,432</u>
Total		\$4,965,263		\$6,311,973		\$6,325,521		\$7,315,908		\$7,347,932
Change %				27%		0%		16%		0%



Notes:

- 1) Rate increases were effective for both the April 2007 and April 2009 billing cycles.
- 2) If you are interested in the water & sewer rates underlying these revenues, please see our separate chart.

Water & Sewage Flow Volumes

(Millions of Gallons)

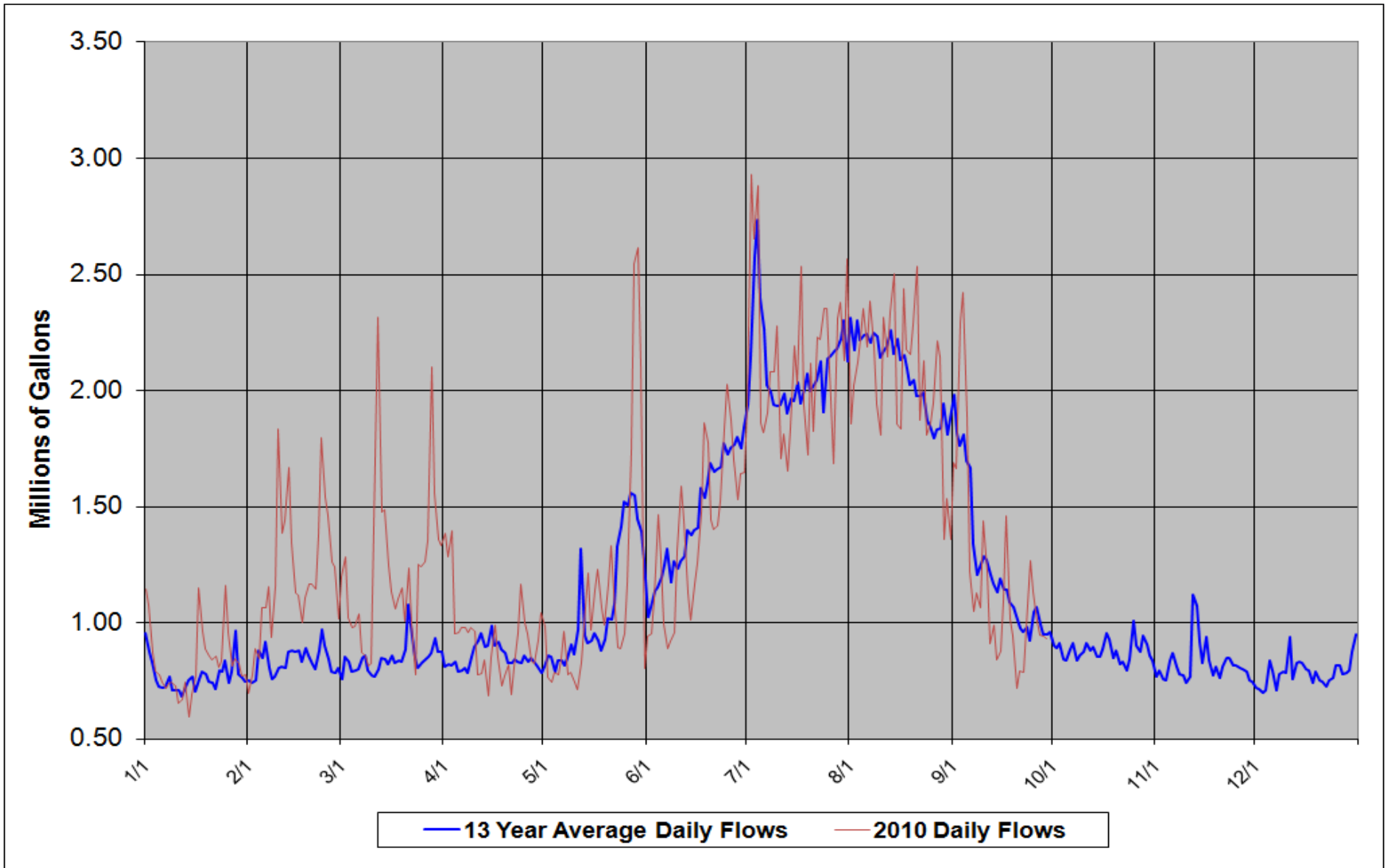
	April Bills		October Bills		Fiscal Year		Monthly Volumes													
							Jan	Feb	Mar	Apr	May	Jun	Jul	Aug	Sep	Oct	Nov	Dec	Total	
City Well Flows																				
2003	NA		NA		NA		NA	NA	NA	NA	NA	NA	NA	NA	NA	NA	NA	NA	NA	
2004	NA		NA		NA		NA	NA	NA	NA	NA	NA	NA	NA	NA	NA	NA	NA	315.7	
2005	NA		210.9		NA		13.9	11.8	11.7	16.4	22.5	35.9	63.7	60.7	31.8	16.1	13.9	11.3	309.7	-2%
2006	92.9		186.1	-12%	279.0		10.6	9.1	8.2	9.0	18.3	29.2	61.7	59.7	25.9	14.2	11.5	10.4	268.0	-13%
2007	85.6	-8%	175.8	-6%	261.4	-6%	11.1	12.5	8.2	7.9	17.9	30.5	55.0	56.3	27.2	16.0	11.8	11.0	265.3	-1%
2008	86.6	1%	218.1	24%	304.7	17%	11.0	9.7	11.7	12.8	22.9	37.7	66.1	67.1	27.6	17.1	11.9	10.9	306.1	15%
2009	90.2	4%	219.1	0%	309.2	1%	12.1	10.7	11.0	14.1	27.0	36.9	66.0	64.0	31.6	15.5	11.5	9.5	310.0	1%
2010	87.3	-3%	199.7	-9%	287.0	-7%	9.5	9.6	9.8	12.1	22.9	33.1	62.7	59.3	28.9					
2010 YTD Flows							9.5	19.2	28.9	41.0	63.9	97.0	159.6	218.9	247.8					
2010 YTD Change							-21%	-16%	-14%	-15%	-15%	-13%	-10%	-10%	-9%					
Private Water Meter Usage																				
2003	NA		NA		NA															
2004	NA		NA		NA															
2005	NA		NA		NA															
2006	NA		NA		NA															
2007	NA		NA		NA															
2008	NA		192.7		NA															
2009	61.7		193.2	0%	254.9															
2010	51.7	-16%	191.7	-1%	243.4	-5%														
Customer water meter readings are performed twice a year, so monthly usage figures are not available.																				
MUA Flows																				
2003	NA		269.6		NA		24.5	27.9	30.1	29.0	30.8	46.9	67.7	65.1	33.1	25.1	29.2	29.0	438.4	
2004	160.8		257.1	-5%	417.9		22.0	22.4	25.0	27.5	31.4	41.2	63.4	68.5	37.4	26.4	24.2	22.5	412.0	-6%
2005	154.3	-4%	250.6	-3%	404.9	-3%	22.1	21.7	25.6	23.6	32.8	40.9	65.9	61.8	32.2	29.1	22.1	24.4	402.1	-2%
2006	157.0	2%	233.8	-7%	390.8	-3%	28.1	21.1	17.8	20.8	30.4	40.4	65.1	59.4	38.2	29.5	29.0	22.0	401.7	0%
2007	160.2	2%	244.9	5%	405.2	4%	22.5	19.1	23.5	26.0	29.7	43.7	61.8	60.3	33.5	25.4	21.3	26.2	392.8	-2%
2008	151.9	-5%	262.2	7%	414.1	2%	22.6	23.1	23.5	22.6	40.0	45.3	64.7	66.2	35.2	25.0	26.7	30.0	424.6	8%
2009	160.5	6%	275.1	5%	435.6	5%	23.9	19.9	22.5	29.9	36.9	49.9	66.5	69.5	47.8	37.1	34.9	33.1	471.8	11%
2010	212.5	32%	271.9	-1%	484.3	11%	25.8	33.8	37.8	28.4	34.9	40.7	65.1	65.1	36.1					
2010 YTD Flows							25.8	59.5	97.3	125.7	160.6	201.3	266.3	331.4	367.5					
2010 YTD Change							8%	36%	47%	31%	21%	10%	7%	4%	0%					



Notes:

- 1) April bill cycle covers six months ending roughly March 1st , October bill cycle covers six months ending roughly September 1st.
- 2) Five City owned and operated wells that are the source for all of our water.
- 3) Water Meter Usage represents readings from private customers only. Historically, municipal facilities (e.g. City Hall, Community Lodge, Dealy Field, Public Safety Building, Marina, Restrooms, etc.) have not been monitored. The City has begun monitoring roughly 39 facilities over the last year. It is still early in the new monitoring process, but it appears to explain roughly 20-25mg of the 43.6mg difference between City Well Flows and private Water Meter Usage shown above.
- 4) Sea Isle City sewage is sent for MUA treatment through a single location that is the source for the above MUA Flows. Infiltration and Inflow can enter our sewer system from many sources. It is not directly measurable, but is the main reason MUA Flows are currently much more than the City Well Flows.

MUA Sewage Treatment Flows



Notes:
1) Blue historical flows represent the average for each calendar day over the last 13 years. Note the patterns of high historical flows during the summer months as well as for holiday weekends.
2) Maroon 2010 flows represent the actual flows for this year. Note that we had very high flows early in the year, with more normal patterns since then.

Solid Waste Tonnage

Chart 11

Municipal Waste - Monthly Tonnage														
	<u>Jan</u>	<u>Feb</u>	<u>Mar</u>	<u>Apr</u>	<u>May</u>	<u>Jun</u>	<u>Jul</u>	<u>Aug</u>	<u>Sep</u>	<u>Oct</u>	<u>Nov</u>	<u>Dec</u>	<u>Total</u>	<u>Inc.</u>
2001	135	97	130	224	357	401	899	914	457	233	146	136	4,128	
2002	130	102	139	229	390	531	948	888	454	209	161	138	4,321	5%
2003	120	85	137	236	347	550	910	840	481	192	157	140	4,195	-3%
2004	99	110	153	186	353	583	887	864	473	177	153	113	4,150	-1%
2005	113	106	149	173	385	554	862	925	427	189	158	95	4,135	0%
2006	138	79	117	173	392	501	937	893	411	199	147	101	4,087	-1%
2007	127	94	103	168	363	514	895	788	396	203	121	79	3,853	-6%
2008	126	102	113	171	345	512	882	785	386	165	107	121	3,815	-1%
2009	92	95	102	184	321	511	844	845	460	159	135	115	3,862	1%
2010	96	90	111	182	278	531	838	856	413					
2010 YTD	96	186	297	478	756	1,287	2,125	2,981	3,394					
2010 YTD Change	5%	0%	3%	1%	-5%	-1%	-1%	0%	-2%					

Recyclable Paper - Monthly Tonnage														
	<u>Jan</u>	<u>Feb</u>	<u>Mar</u>	<u>Apr</u>	<u>May</u>	<u>Jun</u>	<u>Jul</u>	<u>Aug</u>	<u>Sep</u>	<u>Oct</u>	<u>Nov</u>	<u>Dec</u>	<u>Total</u>	<u>Inc.</u>
2001	44	36	34	52	81	101	140	127	63	48	39	30	795	
2002	42	28	39	47	81	101	146	126	65	51	37	34	795	0%
2003	38	24	41	50	74	107	148	120	67	38	41	41	788	-1%
2004	27	32	45	60	67	110	131	124	67	44	40	36	782	-1%
2005	35	32	42	46	73	116	138	155	73	52	44	36	841	8%
2006	41	30	38	48	88	102	156	135	74	44	54	33	843	0%
2007	35	32	37	52	81	114	145	136	73	48	37	28	819	-3%
2008	41	30	33	44	77	106	153	127	66	36	35	32	780	-5%
2009	25	25	30	39	61	95	125	128	74	32	32	29	693	-11%
2010	24	22	31	37	55	93	126	121	61					
2010 YTD	24	46	77	114	169	262	387	509	569					
2010 YTD Change	-4%	-8%	-4%	-4%	-6%	-5%	-3%	-4%	-5%					

Recyclable Cans & Bottles - Monthly Tonnage														
	<u>Jan</u>	<u>Feb</u>	<u>Mar</u>	<u>Apr</u>	<u>May</u>	<u>Jun</u>	<u>Jul</u>	<u>Aug</u>	<u>Sep</u>	<u>Oct</u>	<u>Nov</u>	<u>Dec</u>	<u>Total</u>	<u>Inc.</u>
2001	21	14	18	26	67	114	230	217	80	32	22	18	860	
2002	23	17	19	31	70	121	244	219	80	33	22	18	897	4%
2003	20	14	21	30	55	117	259	229	93	32	17	23	909	1%
2004	19	15	26	25	59	132	226	222	108	27	23	18	900	-1%
2005	20	18	25	26	74	161	297	307	122	30	29	21	1,130	25%
2006	25	22	26	29	101	153	325	300	99	34	22	18	1,153	2%
2007	29	26	21	28	93	171	330	282	124	41	23	15	1,183	3%
2008	28	30	32	28	96	185	362	321	122	35	22	25	1,283	8%
2009	23	28	19	39	97	165	337	329	144	32	25	23	1,261	-2%
2010	21	34	22	30	72	189	331	323	135					
2010 YTD	21	55	77	107	179	368	699	1,022	1,157					
2010 YTD Change	-7%	9%	11%	-1%	-13%	-1%	-1%	-1%	-2%					



Waste Definitions	
Municipal	Household garbage
Recyclable Paper	Newspapers, magazines, corrugated, junk mail, etc.
Recyclable Cans & Bottles	Glass bottles & jars, aluminum cans, plastic containers, etc.
Construction & Demolition	Waste building material from construction, remodeling, repair and demolition
All Other Waste	Dry bulky waste, asbestos material, tires, scrap metal, propane tanks, white goods, wood pallets, leaves & brush, Xmas trees, etc.

Solid Waste Tonnage

Chart 11

Construction & Demolition - Monthly Tonnage														
	<u>Jan</u>	<u>Feb</u>	<u>Mar</u>	<u>Apr</u>	<u>May</u>	<u>Jun</u>	<u>Jul</u>	<u>Aug</u>	<u>Sep</u>	<u>Oct</u>	<u>Nov</u>	<u>Dec</u>	<u>Total</u>	<u>Inc.</u>
2001	718	398	518	493	550	315	324	346	587	709	608	544	6,110	
2002	498	439	538	497	455	456	225	367	546	611	893	1,000	6,526	7%
2003	624	475	697	611	392	462	383	266	623	919	987	1,048	7,487	15%
2004	869	852	580	622	685	441	327	326	902	1,346	1,334	1,199	9,483	27%
2005	803	908	896	875	691	538	473	511	636	1,068	1,363	881	9,642	2%
2006	713	698	861	456	658	344	205	330	640	968	520	381	6,772	-30%
2007	671	402	537	474	387	458	241	198	336	439	570	453	5,165	-24%
2008	614	305	401	274	371	268	209	161	278	537	315	461	4,193	-19%
2009	240	197	551	420	305	392	199	303	390	424	353	339	4,113	-2%
2010	303	267	389	312	361	542	366	89	409					
2010 YTD	303	570	959	1,271	1,632	2,174	2,540	2,629	3,038					
2010 YTD Change	26%	30%	-3%	-10%	-5%	3%	10%	1%	1%					

All Other Waste - Monthly Tonnage														
	<u>Jan</u>	<u>Feb</u>	<u>Mar</u>	<u>Apr</u>	<u>May</u>	<u>Jun</u>	<u>Jul</u>	<u>Aug</u>	<u>Sep</u>	<u>Oct</u>	<u>Nov</u>	<u>Dec</u>	<u>Total</u>	<u>Inc.</u>
2001	28	43	34	103	71	176	25	18	69	47	43	33	689	
2002	25	21	29	54	70	61	39	25	101	61	39	48	573	-17%
2003	38	46	43	30	77	91	71	83	116	76	60	65	797	39%
2004	30	33	39	80	142	66	76	97	67	102	66	39	839	5%
2005	29	27	59	51	67	79	23	85	188	54	88	48	799	-5%
2006	26	57	50	37	73	91	38	35	91	57	47	45	646	-19%
2007	20	38	34	51	149	68	57	54	148	68	91	54	831	29%
2008	31	22	29	61	207	122	99	81	111	79	56	31	929	12%
2009	13	24	75	53	131	111	91	62	138	73	85	50	908	-2%
2010	37	14	94	70	119	122	93	24	139					
2010 YTD	37	51	145	216	335	457	550	574	713					
2010 YTD Change	176%	37%	29%	30%	13%	12%	10%	2%	2%					

Total Solid Waste - Monthly Tonnage														
	<u>Jan</u>	<u>Feb</u>	<u>Mar</u>	<u>Apr</u>	<u>May</u>	<u>Jun</u>	<u>Jul</u>	<u>Aug</u>	<u>Sep</u>	<u>Oct</u>	<u>Nov</u>	<u>Dec</u>	<u>Total</u>	<u>Inc.</u>
2001	946	588	734	898	1,126	1,107	1,618	1,622	1,256	1,069	859	761	12,583	
2002	718	608	765	858	1,065	1,270	1,602	1,625	1,246	965	1,153	1,238	13,112	4%
2003	840	643	939	957	945	1,327	1,771	1,538	1,380	1,257	1,262	1,315	14,176	8%
2004	1,044	1,041	843	973	1,306	1,332	1,648	1,633	1,618	1,696	1,615	1,405	16,154	14%
2005	999	1,091	1,170	1,171	1,290	1,449	1,792	1,984	1,445	1,392	1,682	1,081	16,547	2%
2006	943	886	1,092	742	1,312	1,191	1,661	1,692	1,315	1,302	789	576	13,500	-18%
2007	881	592	731	774	1,073	1,324	1,668	1,459	1,077	800	841	629	11,851	-12%
2008	839	489	608	579	1,095	1,192	1,704	1,475	963	851	534	670	11,000	-7%
2009	392	369	776	736	914	1,274	1,597	1,667	1,206	720	630	557	10,838	-1%
2010	481	427	646	632	884	1,477	1,755	1,412	1,156					
2010 YTD	481	908	1,554	2,186	3,070	4,548	6,302	7,714	8,870					
2010 YTD Change	23%	19%	1%	-4%	-4%	2%	4%	0%	-1%					



Waste Definitions

Municipal	Household garbage
Recyclable Paper	Newspapers, magazines, corrugated, junk mail, etc.
Recyclable Cans & Bottles	Glass bottles & jars, aluminum cans, plastic containers, etc.
Construction & Demolition	Waste building material from construction, remodeling, repair and demolition
All Other Waste	Dry bulky waste, asbestos material, tires, scrap metal, propane tanks, white goods, wood pallets, leaves & brush, Xmas trees, etc.

Beach Tag Sales

Beach Tag Revenues - Year-To-Date													
	<u>Jan</u>	<u>Feb</u>	<u>Mar</u>	<u>Apr</u>	<u>May</u>	<u>Jun</u>	<u>Jul</u>	<u>Aug</u>	<u>Sep</u>	<u>Oct</u>	<u>Nov</u>	<u>Dec</u>	<u>Inc.</u>
2004	\$84	\$37,320	\$117,144	\$242,760	\$505,241	\$602,144	\$761,703	\$858,234	\$864,518	\$864,518	\$864,578	\$867,638	
2005	\$192	\$62,136	\$127,284	\$250,560	\$499,314	\$608,691	\$757,591	\$841,696	\$849,775	\$849,955	\$850,087	\$853,687	-2%
2006	\$552	\$36,000	\$109,572	\$259,236	\$529,049	\$609,437	\$778,318	\$858,142	\$859,214	\$859,478	\$860,162	\$864,207	1%
2007	\$840	\$36,156	\$116,328	\$264,468	\$537,167	\$639,619	\$795,081	\$881,399	\$889,175	\$889,175	\$889,925	\$893,795	3%
2008	\$585	\$100,605	\$167,895	\$356,535	\$680,195	\$816,280	\$976,895	\$1,096,620	\$1,096,620	\$1,096,815	\$1,097,085	\$1,100,415	23%
2009	\$570	\$17,265	\$156,645	\$383,125	\$696,770	\$793,405	\$969,435	\$1,083,700	\$1,095,075	\$1,095,090	\$1,098,405	\$1,113,135	1%
2010	\$2,265	\$89,085	\$176,655	\$351,255	\$687,600	\$817,430	\$1,005,325	\$1,123,645	\$1,138,245				
Inc.	287%	-11%	5%	-1%	1%	0%	3%	2%	4%				

Beach Tag Revenues - Monthly												
	<u>Jan</u>	<u>Feb</u>	<u>Mar</u>	<u>Apr</u>	<u>May</u>	<u>Jun</u>	<u>Jul</u>	<u>Aug</u>	<u>Sep</u>	<u>Oct</u>	<u>Nov</u>	<u>Dec</u>
2004	\$84	\$37,236	\$79,824	\$125,616	\$262,481	\$96,903	\$159,559	\$96,531	\$6,284	\$0	\$60	\$3,060
2005	\$192	\$61,944	\$65,148	\$123,276	\$248,754	\$109,377	\$148,900	\$84,105	\$8,079	\$180	\$132	\$3,600
2006	\$552	\$35,448	\$73,572	\$149,664	\$269,813	\$80,388	\$168,881	\$79,824	\$1,072	\$264	\$684	\$4,045
2007	\$840	\$35,316	\$80,172	\$148,140	\$272,699	\$102,452	\$155,462	\$86,318	\$7,776	\$0	\$750	\$3,870
2008	\$585	\$100,020	\$67,290	\$188,640	\$323,660	\$136,085	\$160,615	\$119,725	\$0	\$195	\$270	\$3,330
2009	\$570	\$16,695	\$139,380	\$226,480	\$313,645	\$96,635	\$176,030	\$114,265	\$11,375	\$15	\$3,315	\$14,730
2010	\$2,265	\$86,820	\$87,570	\$174,600	\$336,345	\$129,830	\$187,895	\$118,320	\$14,600			

Beach Tags Revenues - Year-to-Date by Beach Tag Type												
	<u>Pre-Season Beach Tags</u>			<u>Seasonal Beach Tags</u>			<u>Weekly Beach Tags</u>			<u>Daily Beach Tags</u>		
	<u>Fee</u>	<u>Num Sold</u>	<u>Revenues</u>	<u>Fee</u>	<u>Num Sold</u>	<u>Revenues</u>	<u>Fee</u>	<u>Num Sold</u>	<u>Revenues</u>	<u>Fee</u>	<u>Num Sold</u>	<u>Revenues</u>
2007	\$12	36,579	\$438,948	\$15	14,325	\$214,875	\$10	16,804	\$168,040	\$5	25,260	\$126,300
2008	\$15	37,505	\$562,575	\$20	12,715	\$254,300	\$10	16,554	\$165,540	\$5	22,862	\$114,310
2009	\$15	39,456	\$591,840	\$20	11,185	\$223,700	\$10	15,663	\$156,630	\$5	24,573	\$122,865
2010	\$15	36,595	\$548,925	\$20	14,250	\$285,000	\$10	15,962	\$159,620	\$5	28,940	\$144,700



Notes:

- 1) Sea Isle City features a free beach on Wednesdays (except for July 4th Holiday).
- 2) Beach Tags are required from May 29th to September 6th for 2010.
- 3) Christmas 2009 sales campaign moved some 2010 sales back into 2009.

Sea Isle City - Parking Revenues

Chart 13

Parking Revenues - Year-To-Date													
	<u>Jan</u>	<u>Feb</u>	<u>Mar</u>	<u>Apr</u>	<u>May</u>	<u>Jun</u>	<u>Jul</u>	<u>Aug</u>	<u>Sep</u>	<u>Oct</u>	<u>Nov</u>	<u>Dec</u>	<u>Inc.</u>
2000	\$0	\$0	\$0	\$0	\$7,357	\$27,447	\$65,958	\$97,947	\$109,575	\$109,575	\$109,575	\$109,575	
2001	\$0	\$0	\$0	\$0	\$3,617	\$23,625	\$63,209	\$99,286	\$109,927	\$109,927	\$109,927	\$109,927	0%
2002	\$0	\$0	\$0	\$0	\$6,876	\$24,188	\$67,263	\$100,343	\$116,438	\$116,438	\$116,438	\$116,438	6%
2003	\$0	\$0	\$0	\$0	\$4,680	\$24,609	\$63,139	\$104,312	\$117,067	\$117,067	\$117,067	\$117,067	1%
2004	\$0	\$0	\$0	\$0	\$4,406	\$27,707	\$68,266	\$108,488	\$121,050	\$121,050	\$121,050	\$121,050	3%
2005	\$0	\$0	\$0	\$0	\$1,912	\$25,981	\$63,878	\$111,899	\$126,482	\$126,482	\$126,482	\$126,482	4%
2006	\$0	\$0	\$0	\$0	\$2,809	\$26,756	\$70,386	\$113,597	\$125,776	\$125,776	\$125,776	\$125,776	-1%
2007	\$0	\$0	\$0	\$0	\$9,039	\$31,208	\$75,535	\$112,139	\$129,689	\$129,689	\$129,689	\$129,689	3%
2008	\$0	\$0	\$0	\$0	\$7,901	\$25,169	\$71,618	\$110,676	\$126,743	\$126,743	\$126,743	\$126,743	-2%
2009	\$0	\$0	\$0	\$0	\$2,009	\$25,346	\$63,792	\$102,583	\$120,819	\$120,819	\$120,819	\$120,819	-5%
2010	\$0	\$0	\$0	\$0	\$3,132	\$28,103	\$65,418	\$111,160	\$124,484	\$124,484	\$124,484	\$124,484	3%
Inc.	0%	0%	0%	0%	56%	11%	3%	8%	3%	3%	3%	3%	

Parking Revenues - Monthly													
	<u>Jan</u>	<u>Feb</u>	<u>Mar</u>	<u>Apr</u>	<u>May</u>	<u>Jun</u>	<u>Jul</u>	<u>Aug</u>	<u>Sep</u>	<u>Oct</u>	<u>Nov</u>	<u>Dec</u>	<u>Total</u>
2000	\$0	\$0	\$0	\$0	\$7,357	\$20,090	\$38,511	\$31,989	\$11,628	\$0	\$0	\$0	\$109,575
2001	\$0	\$0	\$0	\$0	\$3,617	\$20,009	\$39,584	\$36,077	\$10,641	\$0	\$0	\$0	\$109,927
2002	\$0	\$0	\$0	\$0	\$6,876	\$17,312	\$43,075	\$33,080	\$16,095	\$0	\$0	\$0	\$116,438
2003	\$0	\$0	\$0	\$0	\$4,680	\$19,929	\$38,530	\$41,173	\$12,755	\$0	\$0	\$0	\$117,067
2004	\$0	\$0	\$0	\$0	\$4,406	\$23,301	\$40,559	\$40,223	\$12,561	\$0	\$0	\$0	\$121,050
2005	\$0	\$0	\$0	\$0	\$1,912	\$24,069	\$37,897	\$48,021	\$14,582	\$0	\$0	\$0	\$126,482
2006	\$0	\$0	\$0	\$0	\$2,809	\$23,947	\$43,630	\$43,211	\$12,179	\$0	\$0	\$0	\$125,776
2007	\$0	\$0	\$0	\$0	\$9,039	\$22,168	\$44,327	\$36,604	\$17,551	\$0	\$0	\$0	\$129,689
2008	\$0	\$0	\$0	\$0	\$7,901	\$17,268	\$46,450	\$39,058	\$16,067	\$0	\$0	\$0	\$126,743
2009	\$0	\$0	\$0	\$0	\$2,009	\$23,337	\$38,447	\$38,790	\$18,237	\$0	\$0	\$0	\$120,819
2010	\$0	\$0	\$0	\$0	\$3,132	\$24,971	\$37,315	\$45,743	\$13,324	\$0	\$0	\$0	\$124,484



Notes:

- 1) Parking meters are effective May 15th to Sept 15th.
- 2) Green Acres parking meter revenues are deposited to the Tennis Fee Trust Fund, and are not included in above figures (2010 = \$7,692 2009 = \$11,454 2008 = \$11,080).

Sea Isle City - Rental Permit Sales

Chart 14

	<u>Rental Permits Issued - Year-To-Date</u>												<u>Late Fee Permits</u>	
	<u>Jan</u>	<u>Feb</u>	<u>Mar</u>	<u>Apr</u>	<u>May</u>	<u>Jun</u>	<u>Jul</u>	<u>Aug</u>	<u>Sep</u>	<u>Oct</u>	<u>Nov</u>	<u>Dec</u>		<u>Inc.</u>
1999												2,420		
2000												2,492	3%	
2001												2,491	0%	
2002												2,551	2%	
2003												2,507	-2%	
2004												2,528	1%	21
2005												2,468	-2%	60
2006												2,529	2%	43
2007	2	328	1,045	1,736	2,327	2,411	2,443	2,454	2,456	2,456	2,457	2,458	-3%	87
2008	0	712	1,156	1,761	2,289	2,355	2,377	2,381	2,382	2,383	2,383	2,384	-3%	63
2009	0	117	988	1,661	2,252	2,327	2,352	2,367	2,369	2,369	2,370	2,371	-1%	76
2010	0	354	982	1,705	2,097	2,188	2,212	2,218	2,220					81
Inc.	0%	203%	-1%	3%	-7%	-6%	-6%	-6%	-6%	-6%				

	<u>Rental Permit Revenues - Year-To-Date</u>												<u>Avg Fee</u>	
	<u>Jan</u>	<u>Feb</u>	<u>Mar</u>	<u>Apr</u>	<u>May</u>	<u>Jun</u>	<u>Jul</u>	<u>Aug</u>	<u>Sep</u>	<u>Oct</u>	<u>Nov</u>	<u>Dec</u>		<u>Inc.</u>
1999												\$203,280		\$84.00
2000												\$209,328	3%	\$84.00
2001												\$209,244	0%	\$84.00
2002												\$214,248	2%	\$83.99
2003												\$210,588	-2%	\$84.00
2004												\$214,263	2%	\$84.76
2005												\$212,772	-1%	\$86.21
2006												\$216,349	2%	\$85.55
2007	\$168	\$27,468	\$87,780	\$145,824	\$195,468	\$206,892	\$212,107	\$213,941	\$214,200	\$214,200	\$214,284	\$214,459	-1%	\$87.25
2008	\$0	\$59,808	\$97,104	\$147,924	\$192,276	\$201,460	\$205,128	\$205,737	\$205,912	\$206,087	\$206,087	\$206,262	-4%	\$86.52
2009	\$0	\$9,828	\$82,992	\$139,524	\$189,168	\$199,017	\$202,937	\$205,198	\$205,457	\$205,457	\$205,632	\$205,716	0%	\$86.73
2010	\$0	\$44,600	\$123,100	\$213,475	\$262,475	\$276,650	\$280,450	\$281,450	\$281,800					\$126.94
Inc.	0%	354%	48%	53%	39%	39%	38%	37%	37%					



Notes:

- 1) 2010 Rental Permit Fees is \$125 (\$175 after June 1st deadline unless new property renter/owner). This was a 49% increase from \$84 for 2009.
- 2) Daily records show that some permits were recorded after June 1st deadline at the lower fee (2007=50, 2008=27, 2009=42, 2010=43)

Crime Statistics

Chart 15

<u>Violent Crimes</u>						
	<u>Murder</u>	<u>Rape</u>	<u>Robbery</u>	<u>Aggravated Assault</u>	<u>Subtotal</u>	<u>Chg</u>
1998	0	4	0	9	13	
1999	0	7	0	8	15	15%
2000	0	2	1	6	9	-40%
2001	0	0	3	14	17	89%
2002	0	0	1	12	13	-24%
2003	0	0	0	14	14	8%
2004	0	4	0	17	21	50%
2005	0	0	1	16	17	-19%
2006	0	0	0	18	18	6%
2007	0	0	0	14	14	-22%
2008	0	2	2	6	10	-44%
2009	0	6	1	19	26	86%
2010	Not Yet Available					

<u>Non-Violent Crimes</u>					
	<u>Burglary</u>	<u>Larceny</u>	<u>Motor Vehicle Theft</u>	<u>Subtotal</u>	<u>Chg</u>
1998	44	210	2	256	
1999	26	244	4	274	7%
2000	28	195	5	228	-17%
2001	41	169	3	213	-7%
2002	41	236	5	282	32%
2003	31	192	3	226	-20%
2004	34	198	8	240	6%
2005	24	273	3	300	25%
2006	16	276	5	297	-1%
2007	28	264	2	294	-1%
2008	63	174	3	240	-19%
2009	97	218	6	321	9%
2010	Not Yet Available				

<u>Total Crimes</u>	<u>Chg</u>
269	
289	7%
237	-18%
230	-3%
295	28%
240	-19%
261	9%
317	21%
315	-1%
308	-2%
250	-19%
347	39%



Notes:
 1) Crime statistics reported from State of New Jersey Uniform Crime Reports, which are managed by the Federal Bureau of Investigation.

Noise Statistics

Chart 16

	<u>Noise</u>				<u>Involved</u>	<u>Incidents</u>	<u>Houses with</u>	<u>Houses with</u>
	<u>Calls</u>	<u>Chg</u>	<u>Arrests</u>	<u>Chg</u>	<u>Houses</u>	<u>With Arrests</u>	<u>2 Incidents</u>	<u>3+ Incidents</u>
1991	NA		505		109	135	12	4
1992	NA		560	11%	105	133	13	7
1993	NA		575	3%	88	96	5	3
1994	NA		396	-31%	55	69	5	4
1995	NA		377	-5%	50	65	7	4
1996	NA		291	-23%	35	37	2	0
1997	NA		419	44%	92	103	12	0
1998	NA		390	-7%	63	81	12	3
1999	NA		204	-48%	51	69	3	3
2000	NA		336	65%	40	47	3	2
2001	464		169	-50%	22	24	2	0
2002	441	-5%	29	-83%	7	7	0	0
2003	400	-9%	47	62%	18	18	0	0
2004	367	-8%	217	362%	22	25	3	0
2005	376	2%	81	-63%	15	17	2	0
2006	462	23%	59	-27%	21	26	5	0
2007	405	-12%	128	117%	16	21	4	1
2008	353	-13%	183	43%	39	43	6	0
2009	280	-21%	156	-15%	42	52	8	2
2010	324	16%	221	42%	46	53	7	2



Notes:

- 1) Noise statistics reported from Memorial Day weekend to Labor Day weekend.
- 2) Statistics reported by Sea Isle Police Department (see Town Watch Town Pride newsletters for more detailed Involved House information).

Sea Isle City - Beachcombing Tours

Chart 17

<u>Adult Beachcombers - Monthly</u>														
	<u>Jan</u>	<u>Feb</u>	<u>Mar</u>	<u>Apr</u>	<u>May</u>	<u>Jun</u>	<u>Jul</u>	<u>Aug</u>	<u>Sep</u>	<u>Oct</u>	<u>Nov</u>	<u>Dec</u>	<u>Total</u>	<u>Inc.</u>
2000	0	0	0	0	0	147	420	448	0	0	0	0	1,015	
2001	0	0	0	0	0	152	437	377	0	0	0	0	966	-5%
2002	0	0	0	0	0	230	435	422	0	0	0	0	1,087	13%
2003	0	0	0	0	0	102	448	383	0	0	0	0	933	-14%
2004	0	0	0	0	0	157	451	403	0	0	0	0	1,011	8%
2005	0	0	0	0	0	166	334	403	0	0	0	0	903	-11%
2006	0	0	0	0	0	140	329	472	0	0	0	0	941	4%
2007	0	0	0	0	0	161	521	404	0	0	0	0	1,086	15%
2008	0	0	0	0	0	197	484	458	0	0	0	0	1,139	5%
2009	0	0	0	0	0	142	273	268	0	0	0	0	683	-40%
2010	0	0	0	0	0	131	428	278	0	0	0	0	837	23%

<u>Children Beachcombers - Monthly</u>														
	<u>Jan</u>	<u>Feb</u>	<u>Mar</u>	<u>Apr</u>	<u>May</u>	<u>Jun</u>	<u>Jul</u>	<u>Aug</u>	<u>Sep</u>	<u>Oct</u>	<u>Nov</u>	<u>Dec</u>	<u>Total</u>	<u>Inc.</u>
2000	0	0	0	0	0	142	528	538	0	0	0	0	1,208	
2001	0	0	0	0	0	176	514	426	0	0	0	0	1,116	-8%
2002	0	0	0	0	0	262	620	515	0	0	0	0	1,397	25%
2003	0	0	0	0	0	108	574	430	0	0	0	0	1,112	-20%
2004	0	0	0	0	0	178	525	497	0	0	0	0	1,200	8%
2005	0	0	0	0	0	230	417	488	0	0	0	0	1,135	-5%
2006	0	0	0	0	0	150	361	586	0	0	0	0	1,097	-3%
2007	0	0	0	0	0	198	571	451	0	0	0	0	1,220	11%
2008	0	0	0	0	0	225	550	540	0	0	0	0	1,315	8%
2009	0	0	0	0	0	153	321	332	0	0	0	0	806	-39%
2010	0	0	0	0	0	144	497	370	0	0	0	0	1,011	25%

<u>Total Beachcombers - Monthly</u>														
	<u>Jan</u>	<u>Feb</u>	<u>Mar</u>	<u>Apr</u>	<u>May</u>	<u>Jun</u>	<u>Jul</u>	<u>Aug</u>	<u>Sep</u>	<u>Oct</u>	<u>Nov</u>	<u>Dec</u>	<u>Total</u>	<u>Inc.</u>
2000	0	0	0	0	0	289	948	986	0	0	0	0	2,223	
2001	0	0	0	0	0	328	951	803	0	0	0	0	2,082	-6%
2002	0	0	0	0	0	492	1,055	937	0	0	0	0	2,484	19%
2003	0	0	0	0	0	210	1,022	813	0	0	0	0	2,045	-18%
2004	0	0	0	0	0	335	976	900	0	0	0	0	2,211	8%
2005	0	0	0	0	0	396	751	891	0	0	0	0	2,038	-8%
2006	0	0	0	0	0	290	690	1,058	0	0	0	0	2,038	0%
2007	0	0	0	0	0	359	1,092	855	0	0	0	0	2,306	13%
2008	0	0	0	0	0	422	1,034	998	0	0	0	0	2,454	6%
2009	0	0	0	0	0	295	594	600	0	0	0	0	1,489	-39%
2010	0	0	0	0	0	275	925	648	0	0	0	0	1,848	24%



Notes:

- 1) For 22 years, volunteers have led beachcombing tours from mid-June to the end of August. Sponsored by the Environmental Commission, the tours have had 39,000 adults and children become more aware of the importance of protecting our sensitive environment.
- 2) Tours are available on 10am Tuesdays (29th St. & Beach) or 10am Thursdays (TI Waterfront Park), weather permitting. Tickets are \$1 for adults and 50¢ for children (free sand pail included).
- 3) 2009's falloff was heavily influenced by four rain event cancellations. 2010 had one cancellation date with rainshowers affecting another.

Sea Isle City - Diamondback Terrapin (Turtle) Road Kills

<u>Diamondback Terrapin Road Kills - Full Season Statistics</u>					
	<u>Sea Isle Boulevard</u>	<u>JFK Boulevard</u>	<u>Central Avenue</u>	<u>Landis Avenue</u>	<u>Total Sea Isle City</u>
2003	70	0	40	97	207
2004	64	0	49	69	182
2005	72	0	29	79	180
2006	38	0	34	36	108
2007	48	0	22	75	145
2008	56	0	29	81	166
2009	50	2	44	41	137
2010	95	0	26	39	160

Notes:

- 1) All road kills are female Diamondback Terrapins who emerge to lay their eggs.
- 2) Nesting periods occur in 3 waves between June 1st and July 15th, with hatching occurring in mid-August.
- 3) Terrapin fencing was installed along portions of Sea Isle Blvd for the first time in 2009 and on portions of Landis Avenue for the first time since 2005.
- 4) Road kill statistics gathered from data secured by Wetlands Institute intern road patrols.
- 5) 2010 nesting season started early, a week before Memorial Day. Nesting terrapins were out in full force for the Memorial Day weekend traffic, which is never a good thing. This was offset somewhat by additional fencing on Landis Ave from 2nd to 1st streets and more public awareness due to increased signage on Central Ave. The 90% increase on Sea Isle Blvd is a concern, where 45 more terrapins were killed in 2010 than in 2009. Some ideas for reducing this road kill are additional fencing extending down to the Garden State Parkway and a reduction in the speed limit.

