



Kayak Launch



Dog Park



Volleyball Court



Bocce Court



Dog Beach

Passive Park Concept North End of Sea Isle City



Outdoor Showers



Shuffleboard Court



Osprey Stands

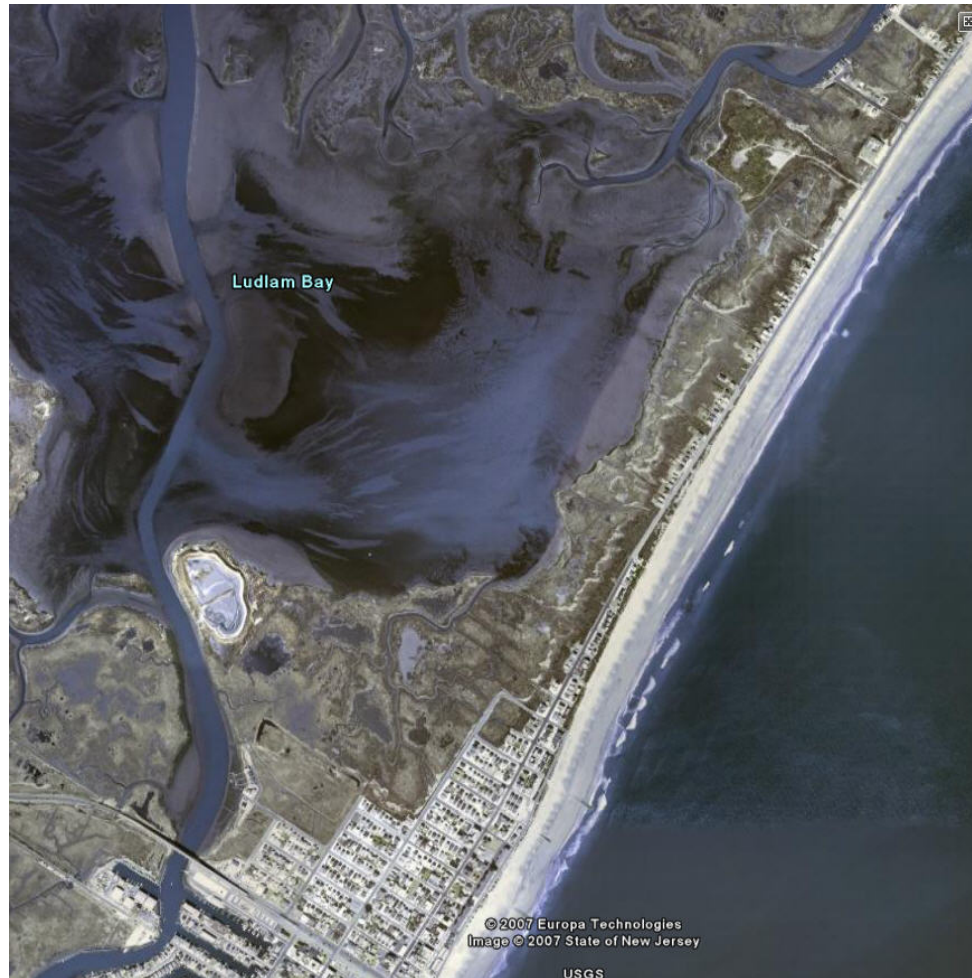


Wetland Bike Path



Restrooms & Snack Bars

Passive Park Location





Passive Park Concept

Passive Recreational Activities:

- Tend to be Low Maintenance
- Do not Require Formal Programming by Rec Dept
- Are Enjoyed on First-Come, First-Serve Basis
- Exclude use of Motorized Vehicles
- Exclude use of Amplified Sounds
- Exclude use of Artificial Light



What would be in Our Passive Park? That's up to Our Community

Traditional Passive Park Recreational Activities

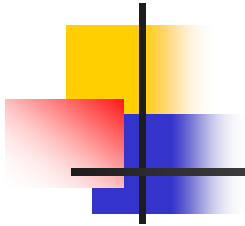
- Bird Watching/Wildlife Observation
- Walking/Hiking
- Biking (Wetland Bike Path)
- Kayaking/Canoeing
- Picnicking

In our "Concept Park" we have added

- Dog Park & Dog Beach
- Bocce Courts
- Shuffleboard Courts
- Volleyball Courts

What Would You Like to See in the Park?

Where would our Passive Park be Located?

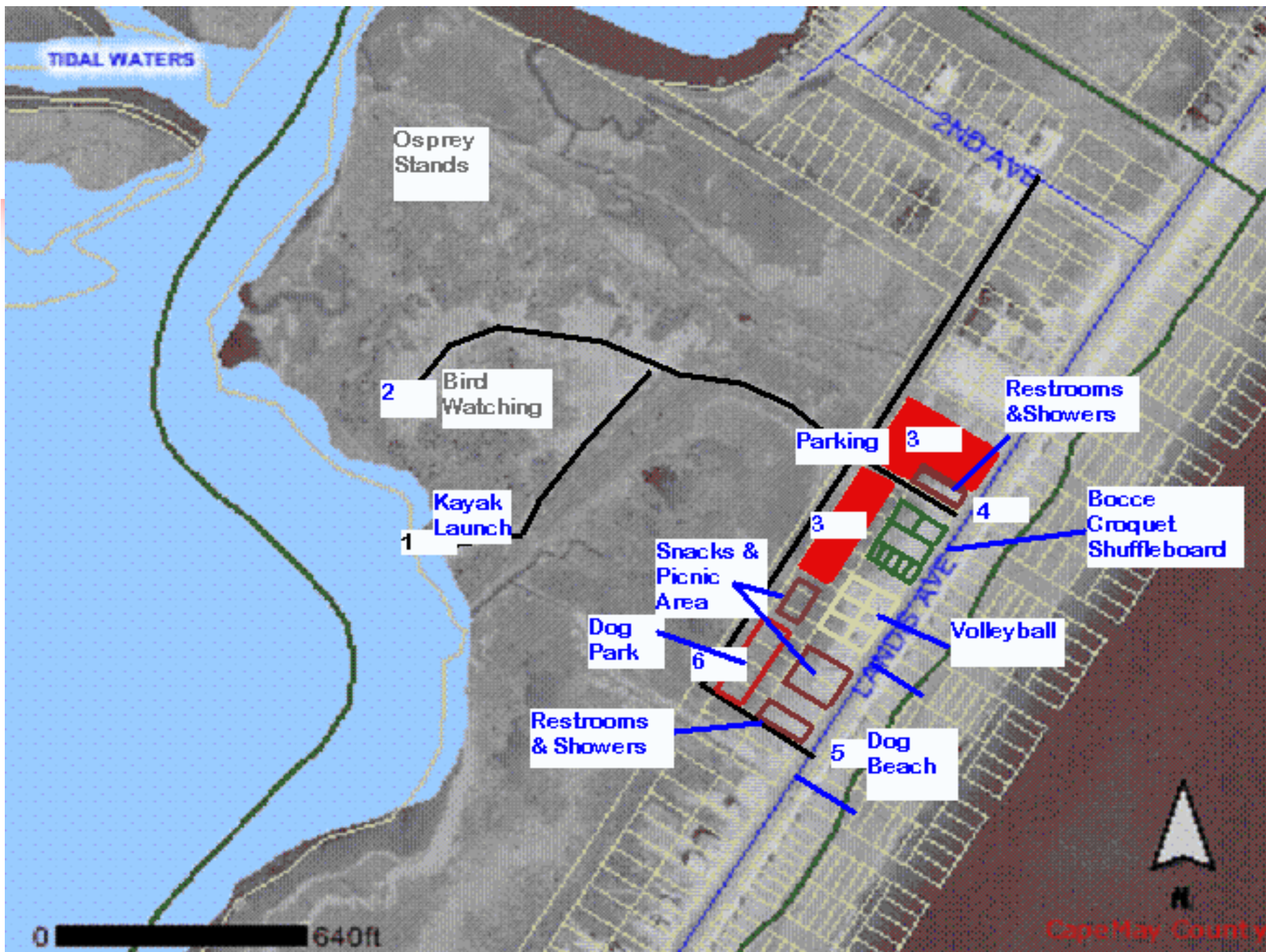


Area is

- Bordered on the North by 3rd Street
- Bordered on the South by 8th Street
- Bordered on the East by Landis Avenue
- Bordered on the West by the Bay

Area estimated at 40 to 50 acres. Extension of wetland bike path to 29th St, could expand area to 200 acres.

The area where the Landfill & Paint Chip project is located is an under-utilized and under-appreciated asset of our community. Despite the inattention, this area is a source of hidden natural beauty unknown to our residents and visitors. The additional open space provides an opportunity for new and attractive recreational activities.





Passive Park Development

– Why the Time is Right

- Addresses NJ DEP Public Access proposal
- Provides revenue stream for budget pressures
- Enhances SIC family image
- Promotes SIC tourism via new Destination Site



Passive Park Development

– Addresses NJ DEP Public Access proposal

- NJ DEP Public Access Proposal ties future Beach Replenishment Funding to
 - Providing Parking Sufficient to Accommodate Public Demand to Access Beaches within Our Community
 - Providing Public Restrooms at Linear Distances of ½ mile or less

Our Passive Park Concept Provides some Relief to these Standards



Passive Park Development

– Provides revenue stream for budget pressures

All NJ Municipalities are facing increased Budgetary Pressures.

How do we continue to enhance the image of Sea Isle City as a family vacation destination without burdensome investments or privatization of City Assets?

- Grant Potential?
- State “Remediation” Funds for Landfill Area
- Green Acre Funding
- National Park Services for Planning Assistance

For the ongoing costs, our Passive Park Concept includes funding from

- Metered Parking
- Dog Beach Tags & Dog Park Passes
- Vendor Licenses -Food Concessions/Kayak Rentals/Kayak Tours



Passive Park Development

- Enhances SIC Family Image

- Appeal of Boardwalk Bike Paths thru Natural Wetlands
 - Worry-free Family Biking, Safe from Automobile Traffic and Complemented by Unmatched Vistas
- Appeal of Dog Beaches to Dog Owners
 - First of its kind in NJ
- Appeal of Visitor-Friendly Amenities
 - Picnic Area
 - Snack Concessions
 - Restrooms
 - Outdoor Showers
- Broad Shoulder-Season Appeal
- Enhancing the Recreational opportunities for Residents of all Ages



Passive Park Development

- Promotes SIC business via new Destination Site

- SIC needs more tourists to foster our businesses
- Unique Destination Sites:
 - AC - gaming
 - Wildwood - boardwalk & rides
 - Cape May – architecture & shopping
 - SIC – promenade & passive park?
- Destination Site must have unique features
 - Dog beach
 - Kayak launch
 - Boardwalk wetland bike paths
 - Showers and restrooms



Kayak Launch



Dog Park



Volleyball Court



Bocce Court



Dog Beach

Passive Park Concept North End of Sea Isle City



Outdoor Showers



Shuffleboard Court



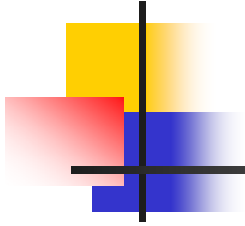
Osprey Stands



Wetland Bike Path



Restrooms & Snack Bars



Passive Park

Recent Concepts

Ludlum Beach Lighthouse - *Sea Isle City, NJ*

Private Residence - Please respect owners privacy

[History](#) | [Characteristics](#) | [Keepers](#) | [Visiting Info](#)

History



Circa 1911



Circa 1907

Images courtesy of
River Reproductions

A lighthouse was erected on Ludlum Beach in 1885, 20 nautical miles SW of the Absecon Lighthouse in Atlantic City at 39° 09' 42" latitude by 74° 41' 05" longitude. The lantern had an elevation of 36 feet above sea level, with a white fourth-order light.

The light flashed once every 15 seconds and was visible about 11 1/4 nautical miles.

One of the keepers was Joshua H. Reeves, who was transferred to Ludlum from Barnegat Lighthouse on October 2, 1885. It is believed he was the lights' first keeper. He served the Ludlum Beach Lighthouse until his retirement on August 6, 1946. It is very likely that he was the only keeper.

In 1923, after a fire in the lighthouse probably caused by a keeper's pet knocking over a kerosene lamp, the lighthouse was replaced by an automatic steel tower. Keeper Reeves job title was changed to "Lampighter" at this time. The lighthouse was sold and moved to the corner of 31st Street and the beach. Sometime in the 1940's it was again moved to 3414 Landis Avenue, Sea Isle City. It is a private residence today.

The steel tower was designed on nautical charts as "Fl 6sec. 45ft. 12m.", which indicates a 45 foot tower with a light that flashes every 6 seconds and is visible for 12 miles. The tower was electrified and had two bulbs, both with red sectors; the second bulb swinging into place when the first bulb burned out.

Source: New Jersey Economic Development District





Kayak Launch



Dog Park



Volleyball Court



Bocce Court



Dog Beach

Passive Park Concept North End of Sea Isle City



Outdoor Showers



Shuffleboard Court



Osprey Stands



Wetland Bike Path



Restrooms & Snack Bars